

BOELE'S QUALITY ASSURANCE AND QUALITY CONTROL PROGRAMME

Some time ago, Boele shipyards and engineering co. ltd. realised that sophisticated design and advanced structural technology - particularly as applied to major projects - require Quality Assurance.

Quality Assurance - which applied to a project - provides documented confidence in the reliability and safety of the vessel or the structure delivered by Boele to the Client and, simultaneously, reduces the production costs thereof.

Involvement in the design, conversion and construction of modern diving support vessels, living quarter modules, underwater valve stations and many similar projects resulted in the steady development and improvement, by Boele, of it's own Quality Assurance programme.

This programme, which exists now for a number of years, is based on the BRITISH STANDARD 5750 part 1, the NORWEGIAN STANDARD 5801, the DRAFT ISO 9001 and the NEN 2646.

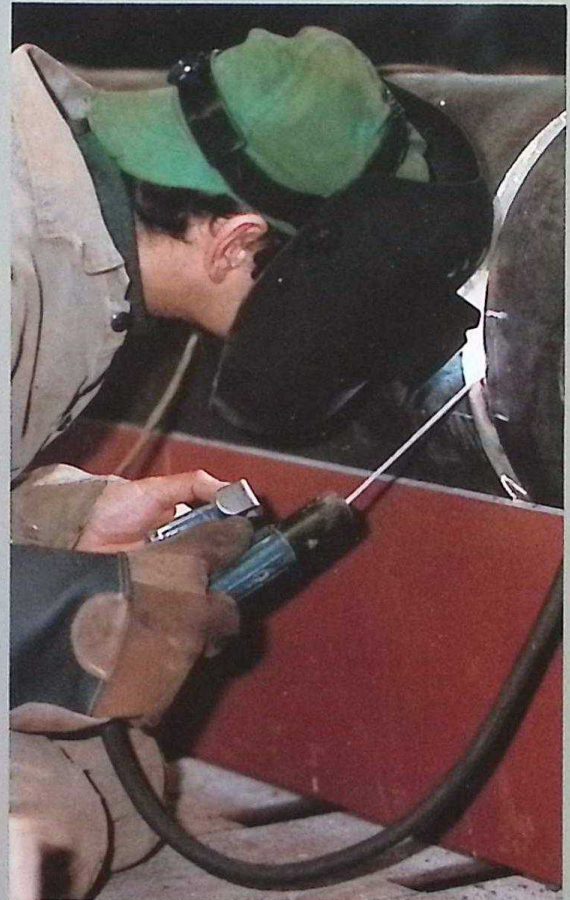
The development of this Q.A. programme resulted in the establishment of procedures for all company activities affecting quality and covers as such aspects as:

- Control of Design and Engineering
- Project Management
- Expediting of material from suppliers and material inspection when received
- Dimensional Control
- Non-destructive testing of structural steel and welding
- Stainless steel construction
- Surface protection inspection
- Control of subcontracted installations
- N.D.T. Training and certification

The programme is combined in a two volume Quality Assurance and Quality Control Manual, which serves as a guideline for the Q.A. plan of a particular project.



Boele's own level II Q.C. inspector in action.



Photos: Jan van Putten - Ridderkerk



Boele Bolnes
Rotterdam

BOELE'S QUALITY ASSURANCE AND QUALITY CONTROL PROGRAMME

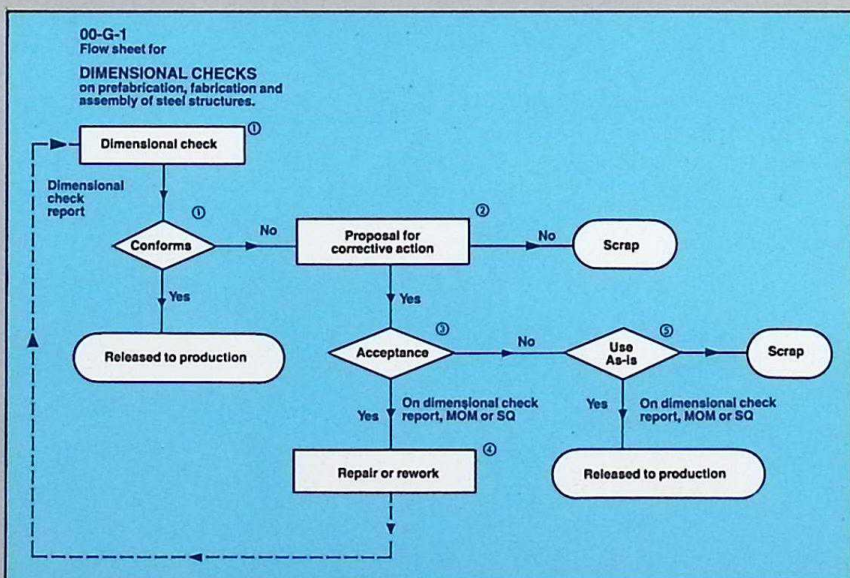
Boele's Q.A. programme has been implemented, during execution of major projects, to the entire satisfaction of clients from the offshore and petrochemical industry, as well as from the specialised shipping industry.

It resulted in a steady progress from the traditional "final inspection approach" towards a "total quality assurance philosophy", designed into the project.

Further, it resulted in the early discovery of non-conformities and in their prompt rectification. Simultaneously it also increased the quality awareness through-out the company's organization.

In addition the company's management, Q.C. inspectors and production personnel have gained wide experience in working according to the requirements of the ASME code (section IX), the ASTM code, AWS rules, etc.

The implementation of this Q.A. programme, at Boele shipyards and engineering co. ltd., ensures that the company can deliver the converted vessel or the structure - on order from the client - to the required quality, at the agreed time and against the right price.



A typical flow sheet, defining Q.C. activities at the yard.



Boele shipyards and engineering co. ltd.
Bolnes, Holland. Postal address P.O.Box 3002 2980 DA Ridderkerk
Telephone (0)1804 - 18555. Telex 20012 boele nl.
Telefax (0)1804 - 18626

Boele Bolnes Rotterdam